

RESOLUTION 91-5

A RESOLUTION OF THE MAYOR AND CITY COUNCIL OF THE CITY OF FRIEND, SALINE COUNTY, NEBRASKA, APPORTIONING THE POPULATION IN THE CITY OF FRIEND AND SCHOOL DISTRICT #68 SO AS TO MAINTAIN PRESENT POLLING PLACES FOR THE EAST WARD AND THE WEST WARD, BUT CHANGING THE PORTIONS OF THE CITY OF FRIEND IN THE EAST WARD AND THE WEST WARD, IN ORDER TO MORE EQUALLY APPORTION THE NUMBER OF VOTERS ACCORDING TO SECTION 5-108.02, R.S. SUPPLEMENT (1990) REVISED STATUTES OF NEBRASKA, ACCORDING TO THE DESCRIPTION HEREIN AND THE MAP ATTACHED HERETO AND MADE A PART HEREOF BY REFERENCE.

IT IS HEREBY RESOLVED BY THE MAYOR AND CITY COUNCIL OF THE CITY OF FRIEND, SALINE COUNTY, NEBRASKA, AS FOLLOWS:

1. In order to comply with Section 5-108.02, R.S. Supplement 1990, of the Revised Statutes of Nebraska, so as to more equally apportion the number of electors in the East Ward and the West Ward of the City of Friend, in conformity with the 1990 National Census records in the Office of the Saline County Clerk, the Mayor and City Council have reapportioned the East Ward and the West Ward of the City of Friend and School District #68, according to the legal description herein and the map attached hereto and made a part hereof by reference marked Exhibit A.

2. The apportionment made between the East Ward and the West Ward, as herein adopted is that the present city councilmen shall remain in the ward in which they were originally elected and that the total number of electors in the East Ward will now be 620 and the total number of electors in the West Ward will be 640.

3. This Resolution shall be effective from the date of passage and publication, until revoked or amended by future action of the Mayor and City Council. The dividing line between the East Ward and the West Ward shall run basically north and south, down Maple Street from "C" Street on the North edge of Friend to Third Street, then one block East to Chestnut Street, then South on Chestnut Street to Ninth Street, then West one block to Maple Street and then South on Maple Street to the South line of the corporate limits of the City of Friend; that the electors in that portion of the City of Friend and the Friend School District #68, located outside of the corporate limits of the City of Friend on the West side of the line described above, shall vote at the City polls at the City Hall in the City of Friend, and the electors in that portion on the East side of such line shall vote at the City polls at the Legion Hall in the City of Friend.

4. The City Clerk is directed to cause this Resolution to be published in a notice in the Friend Sentinel, a legal newspaper published in and of general circulation in School District #68 of the City of Friend and to send a copy thereof with Proof of Publication to the Saline County Clerk at Wilber, Nebraska.

This Resolution offered by Councilman Ross, and seconded by Councilman Tuttle. On roll call, all Councilman voting "aye", the Resolution was passed and adopted.

James W. Voules
MAYOR

ATTEST:

Phyllis Swehla
CITY CLERK

(SEAL)

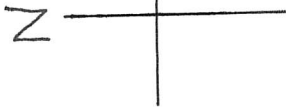
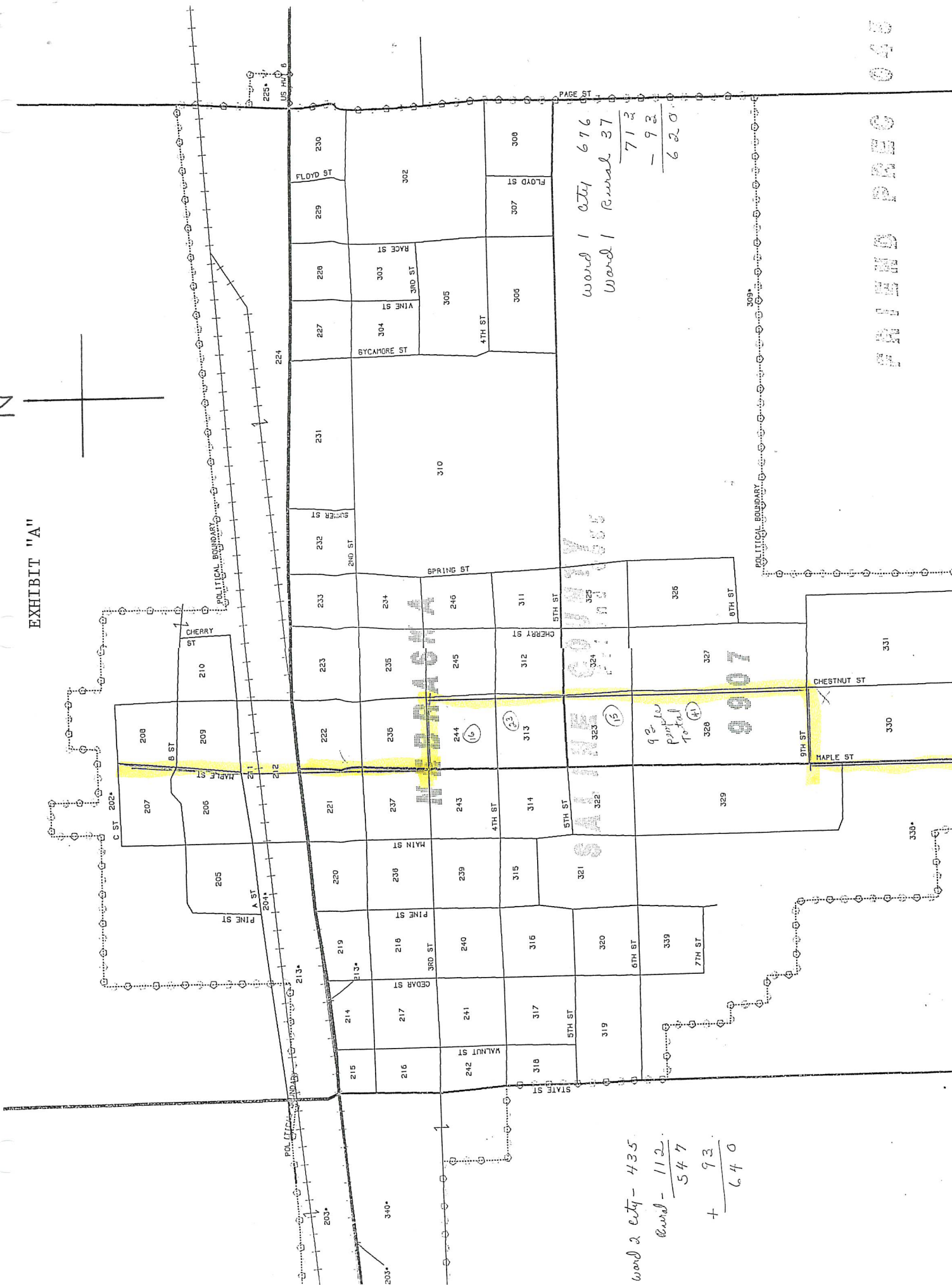


EXHIBIT "A"

PRELIMINARY PREC 043



Word 1 City 676
Word 1 Rural 37
712
- 92
620

Word 2 City - 435
Rural - 112
547
+ 93
640

92
part
Total
41

SALE COPY

SALE COPY

255
US HWY 6

308*

338*

213*

204*

201*

202*

203*

204*

205*

206*

207*

208*

209*

210*

211*

212*

213*

214*

215*

216*

217*

218*

219*

220*

221*

222*

223*

224*

225*

226*

227*

228*

229*

230*

231*

232*

233*

234*

235*

236*

237*

238*

239*

240*

241*

242*

243*

244*

245*

246*

247*

248*

249*

250*

251*

252*

253*

254*

255*

256*

257*

258*

259*

260*

261*

262*

263*

264*

265*

266*

267*

268*

269*

270*

271*

272*

273*

274*

275*

276*

277*

278*

279*

280*

281*

282*

283*

284*

285*

286*

287*

288*

289*

290*

291*

292*

293*

294*

295*

296*

297*

298*

299*

300*

301*

302*

303*

304*

305*

306*

307*

308*

309*

310*

311*

312*

313*

314*

315*

316*

317*

318*

319*

320*

321*

322*

323*

324*

325*

326*

327*

328*

329*

330*

331*

332*

333*

334*

335*

336*

337*

338*

339*

340*

341*

342*

343*

344*

345*

346*

347*

348*

349*

350*

351*

352*

353*

354*

355*

356*

357*

358*

359*

360*

361*

362*

363*

364*

365*

366*

367*

368*

369*

370*

371*

372*

373*

374*

375*

376*

377*

378*

379*

380*

381*

382*

383*

384*

385*

386*

387*

388*

389*

390*

391*

392*

393*

394*

395*

396*

397*

398*

399*

400*

401*

402*

403*

404*

405*

406*

407*

408*

409*

410*

411*

412*

413*

414*

415*

416*

417*

418*

419*

420*

421*

422*

423*

424*

425*

426*

427*

428*

429*

430*

431*

432*

433*

434*

435*

436*

437*

438*

439*

440*

441*

442*

443*

444*

445*

446*

447*

448*

449*

450*

451*

452*

453*

454*

455*

456*

457*

458*

459*

460*

461*

462*

463*

464*

465*

466*

467*

468*

469*

470*

471*

472*

473*

474*

475*

476*

477*

478*

479*

480*

481*

482*

483*

484*

485*

486*

487*

488*

489*

490*

491*

492*

493*

494*

495*

496*

497*

498*

499*

500*

501*

502*

503*

504*

505*

506*

507*

508*

509*

510*

511*

512*

513*

514*

515*

516*

517*

518*

519*

520*

521*

522*

523*

524*

525*

526*

527*

528*

529*

530*

531*

532*

533*

534*

535*

536*

537*

538*

539*

540*

541*

542*

